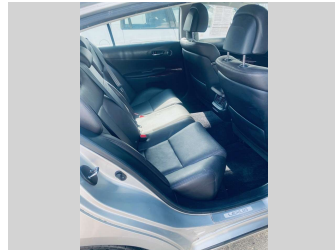
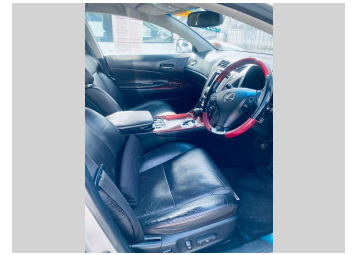



2008 Lexus GS450h HYBRID




Purchase Price **\$8,995**
Includes GST, Registration & Licensing

Finance may be available on this vehicle. Ask one of our friendly staff for more information.



Gain peace of mind with Mechanical Breakdown Insurance. **Ask us how.**

Top features
None Listed

Body Style Sedan	Reg No. PAP636
Odometer 203,683 km	Ext Colour Silver
Engine 3456 cc, Hybrid	History Ex-Overseas
Fuel Type Electricity	Seats 5 seats
Transmission Auto	CO2 Emissions ★★★★☆☆ 201 grams/km
Wheels -	Energy Economy ★★★★☆☆
VIN 7AT0B00GX22015448	Annual fuel cost of \$3,290 8.4L per 100km
Interior -	Cost per year is an estimate based on petrol price of \$2.80 per litre and an average distance of 14000 km. Emissions and Energy Economy figures standardised to 3P WLTP.
Safety 	Stock ID: 1500
Based on 2025 VSRR rating	

GREENSTONE IMPORTS

Greenstone Imports NZ Ltd | Phone 0800132540 | Email bargainautosltd@gmail.com
999 Cameron Road, Gate Pa, Tauranga 3112, New Zealand
www.greenstoneimports.co.nz